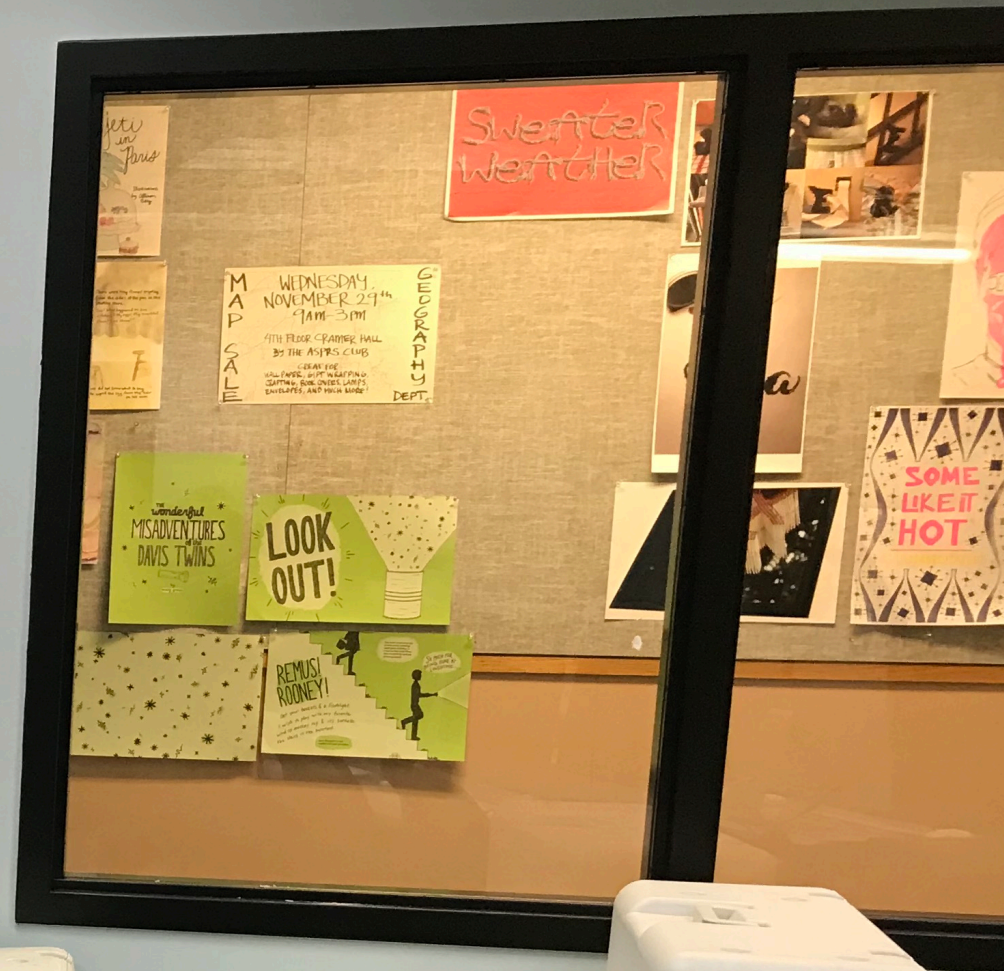
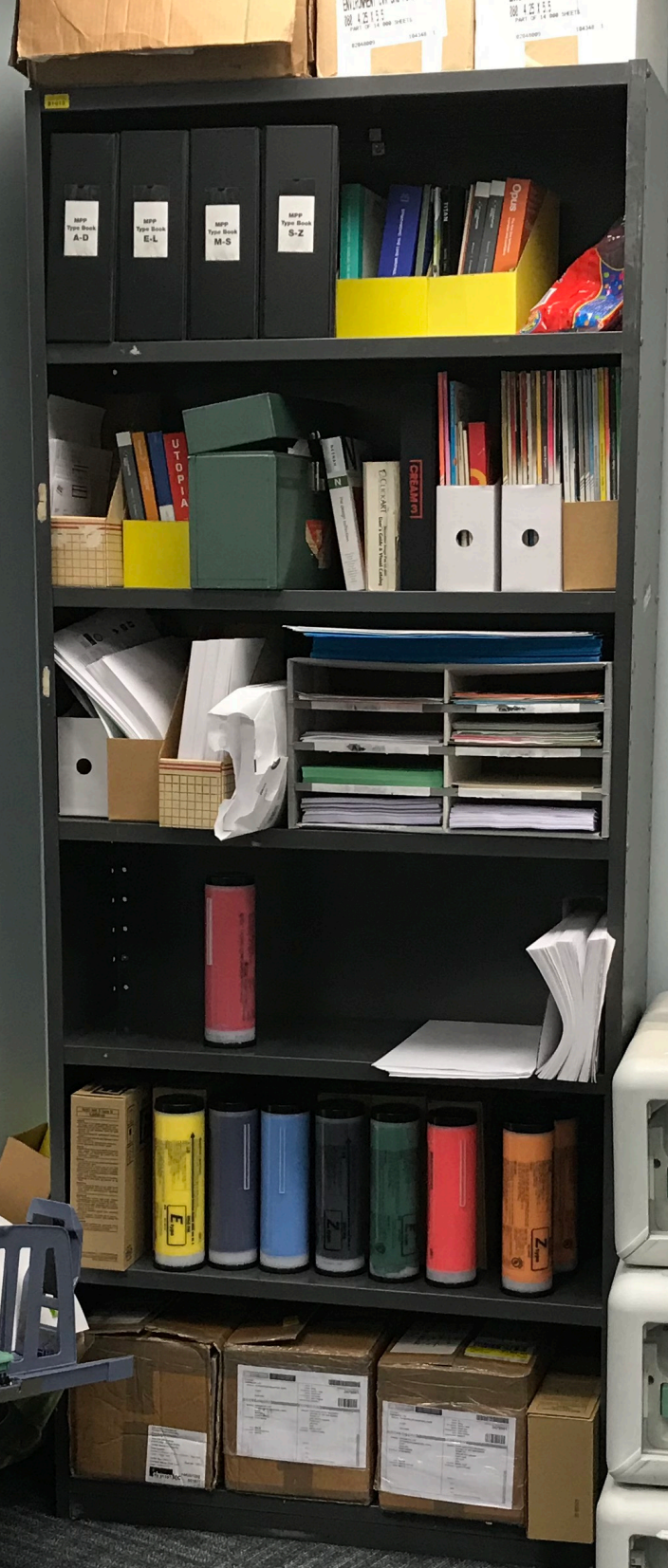


RISO ROOM

MON	11am - 2pm
WED	12pm - 3pm
THU	10am - 11pm



It's not as
read as you
think it is.



Everyone wants to get their hands on a Risograph to experiment and see how their own work might translate on to this mythical printing machine. But what is it?

RISO

不思議と
きれいに
刷れる!!

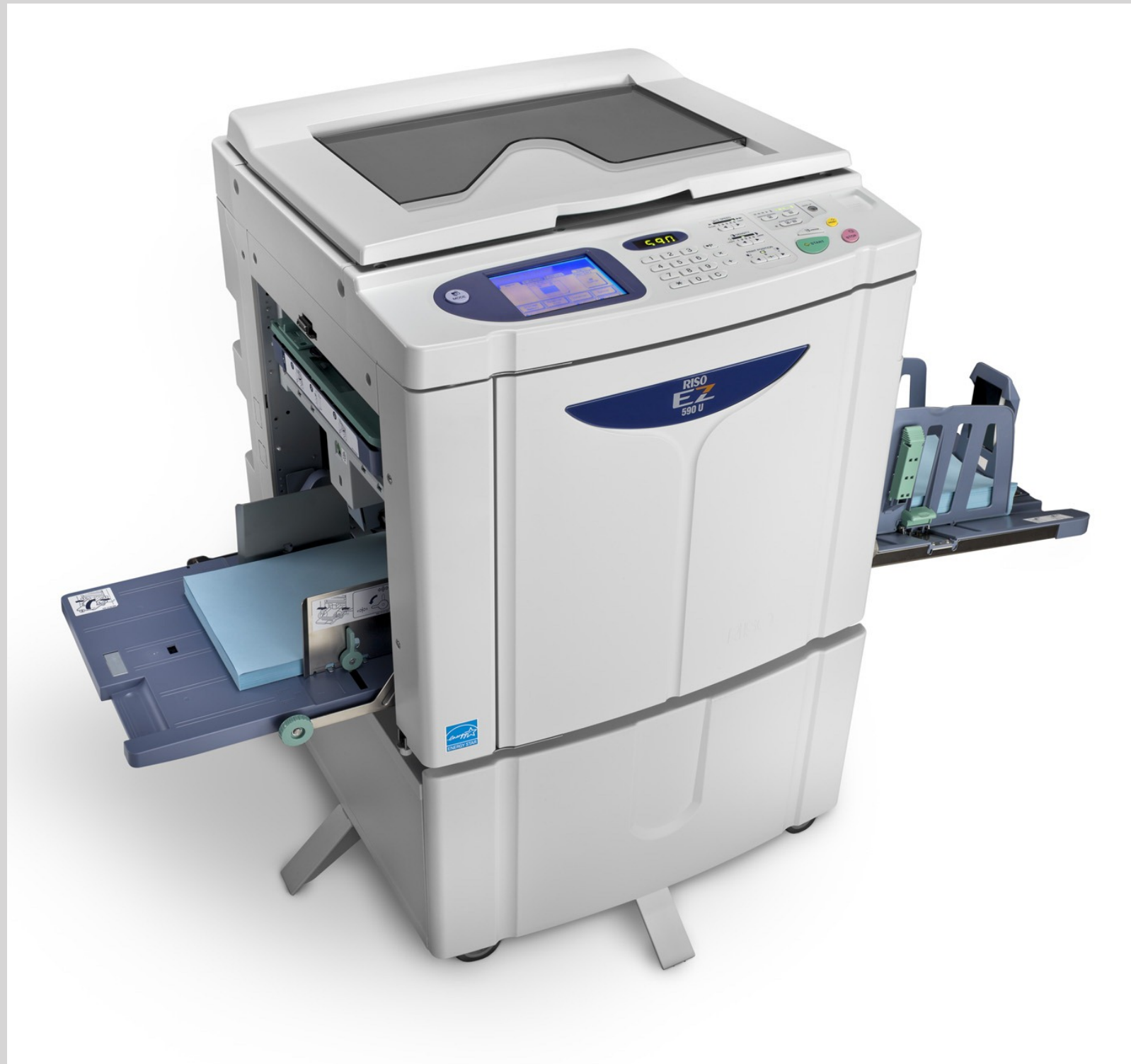


完全中性 謄写インク
RISOインク

(RISO 8色) 黒、あお、あか、きいろ
せびあ、みどり、ぐれい、しろ



It looks like a photocopier.



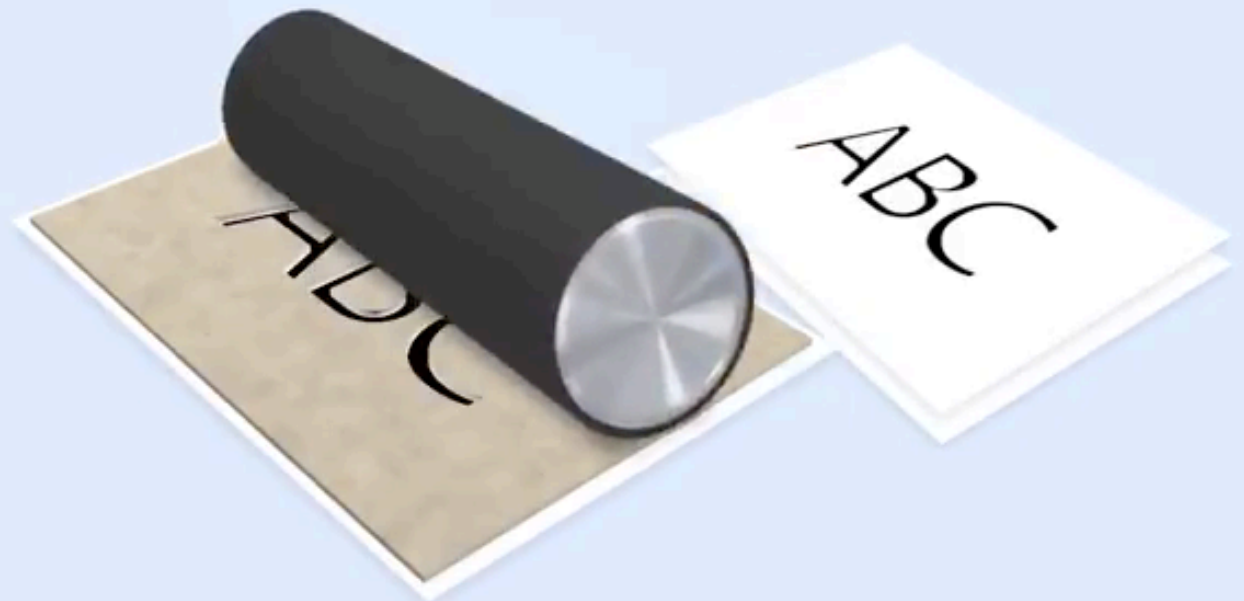
*It functions on the **stencil** method of printing, much like silk screen printing.*

Master making



Preparing the master

Printing



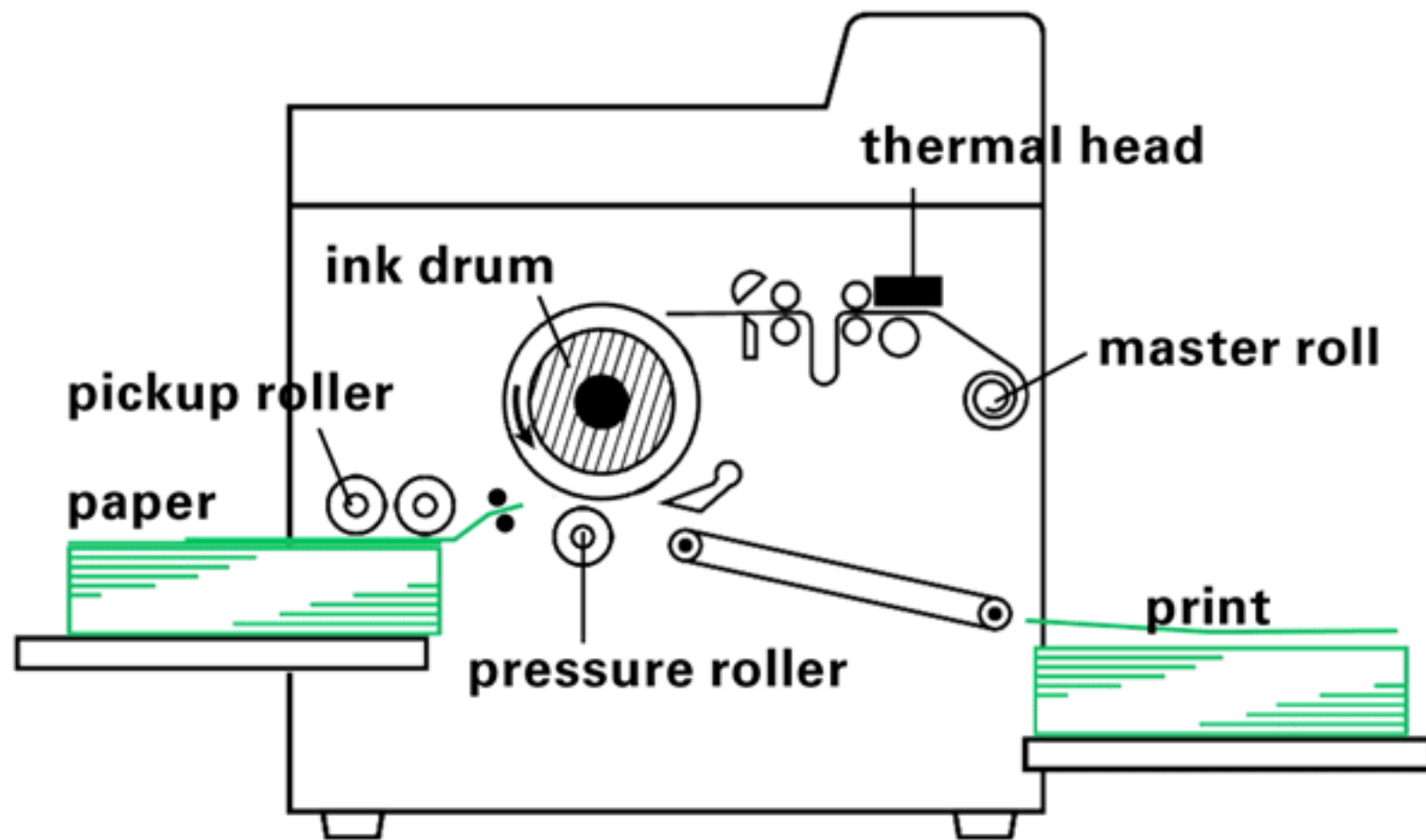


The printing process

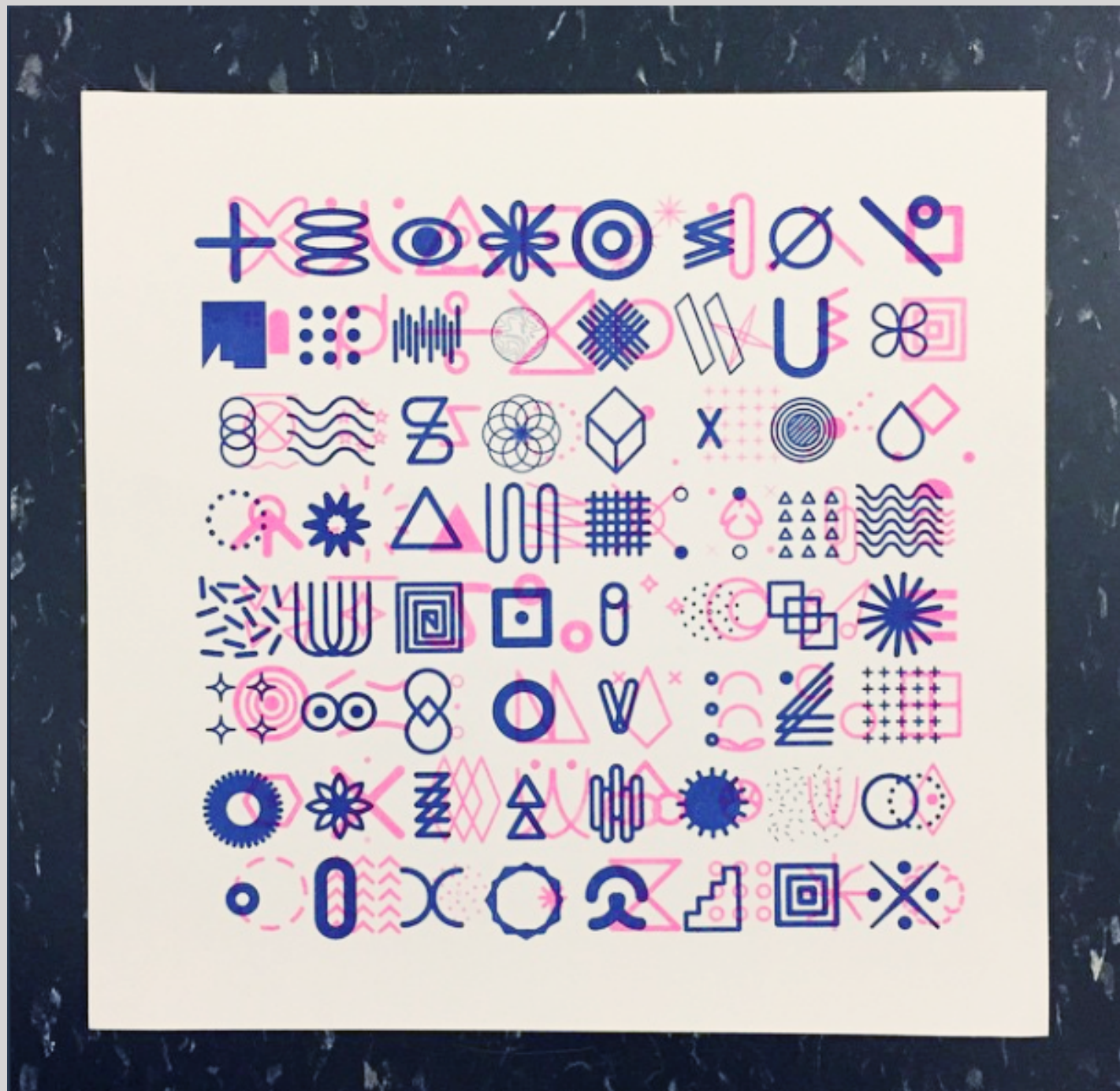
Executed by Riso Fellows

- > A contrast-y image is placed on the scanning bed or PDF on the computer.*
- > From that, the master for one color is made.*
- > Anywhere from one to hundreds of prints can be created from that master in a very short period of time.*
- > A new master is made for every color in the design.*

This is what it looks like when your sheet goes through the machine.



The image below required the sheet to go through the machine 2 times.



So how do you print?

First—

Try not to overthink it. The Riso is actually a very basic method of printing. It's just one color gets printed at a time, so it requires a little planning!

Start with some idea of which colors you would like to use.

*Once you have sketched your ideas and know the final concept, **design/illustrate each color on its own sheet of paper or digital layer.***

Photographs will automatically be turned to greyscale by the machine, but you can improve your results by converting them and adjusting the levels for more contrast.

Tips

*The better the **contrast**, the better the reproduction will be.*

*Check the **color guide** in the lab to see how colors mix to make new ones.*

*Be prepared for **unexpected results**.
This is not a precise printer.*

***Large areas of color** should be set to 80% black (to save ink)*

You must supply your own paper.





Colors available at PSU:

Fluoro Pink

Fluoro Orange

Bright Red (currently unavailable)

Sunflower

Yellow

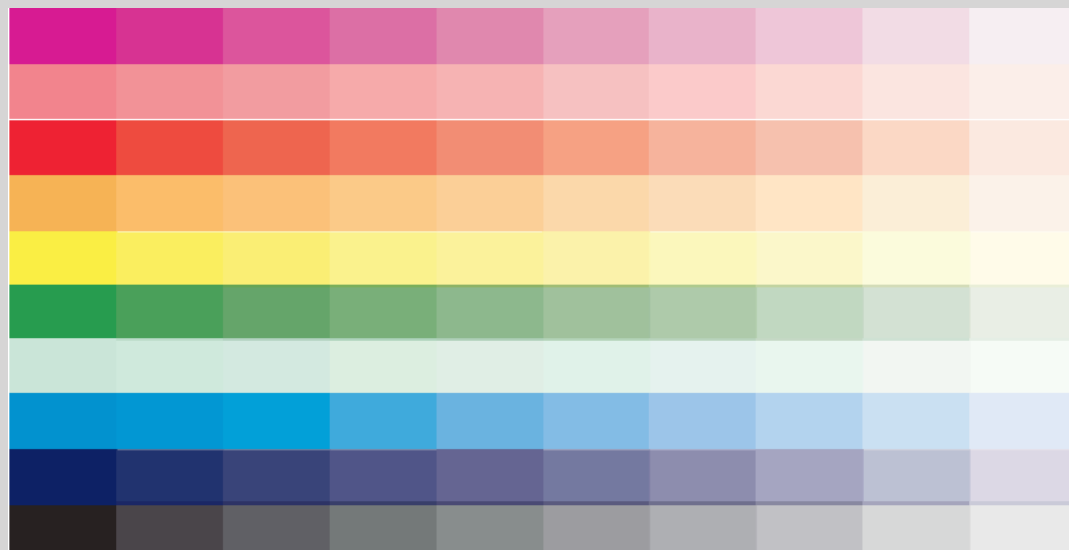
Green

Mist

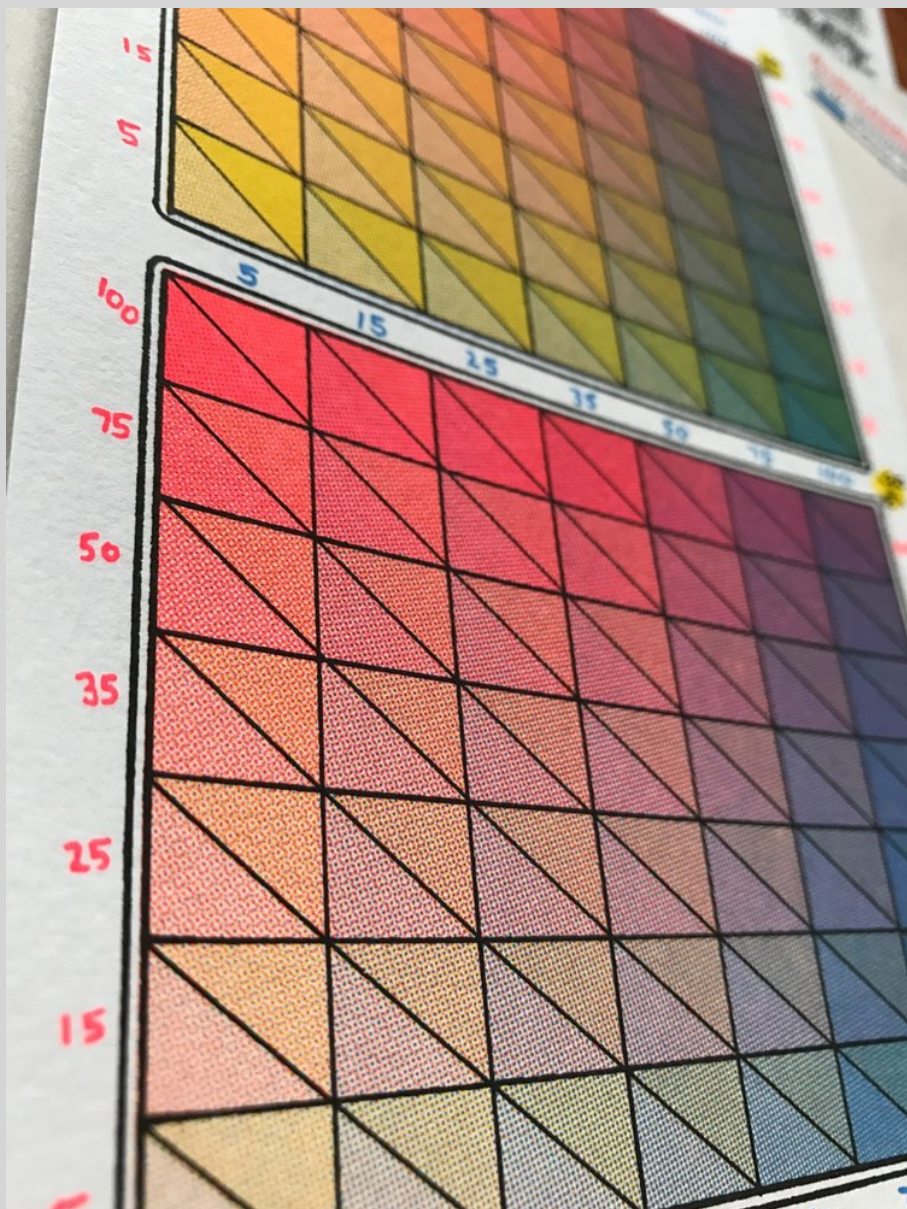
Cornflower Blue

Indigo

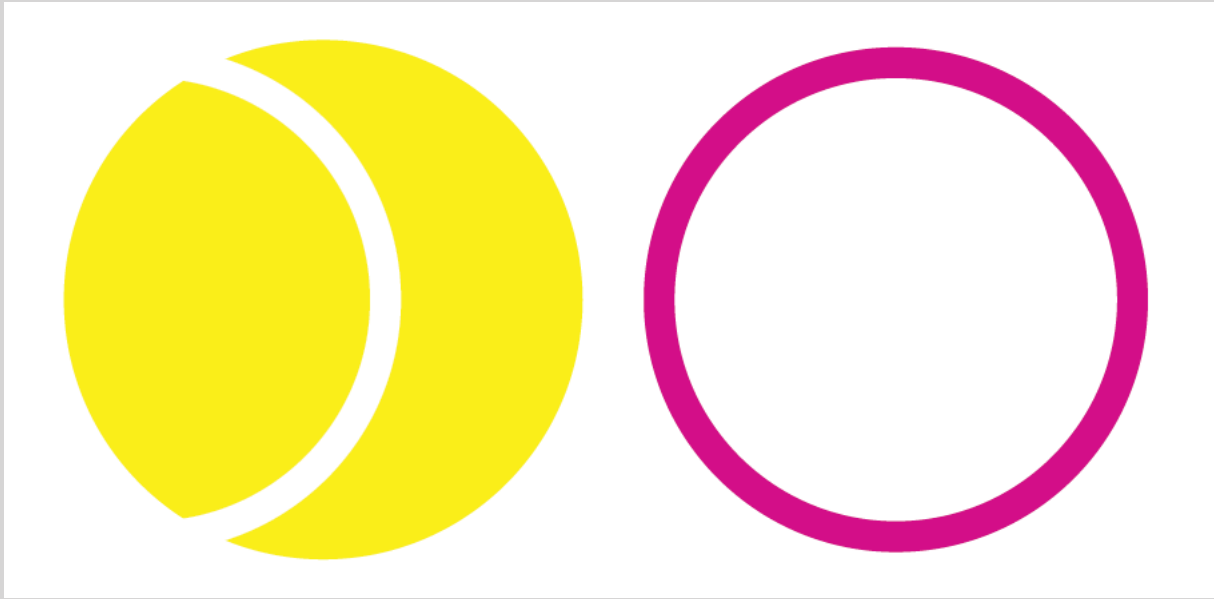
Black



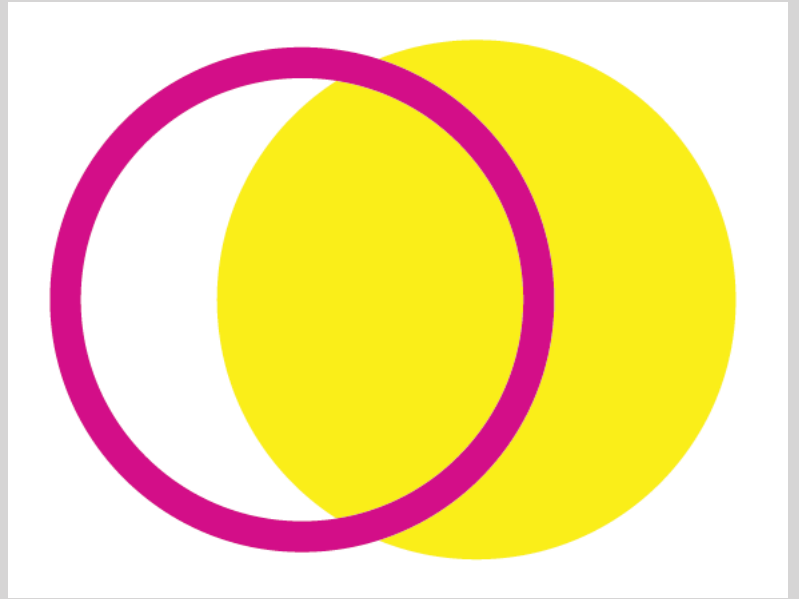
Of course color mixing/overlapping allows for an almost infinite number of color options.







\vee

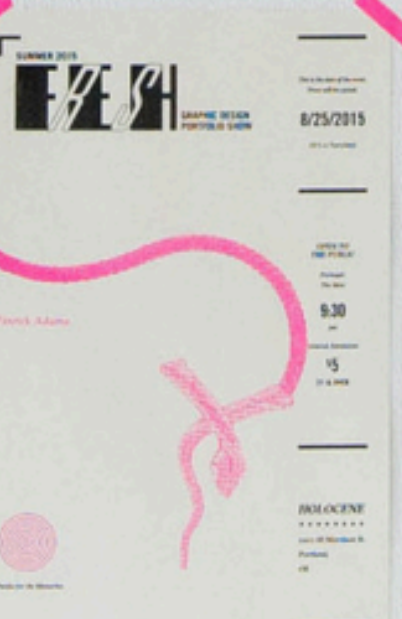


um
and
ah

american themed dive bars & looking the wrong
way when crossing the road & corn in sandwiches
& drinking in parks & full english breakfast &
quaint coffee shops & row houses & the festival of
love & aggressive restaurant owners & children
with sweet accents & tiled subway tunnels & lay
down because i think i might love you & biscuits
& politically informed university students & kebab
& beautiful quiches & shiny oxfords & cow patterned
trash bins & landmarks lit up in the night & street
art & free museums & manhole covers with hearts
on them & double decker buses & broken sandals
& blackened gum on cobblestones & fancy sounding
beggars & eighteen year old scotch for five quid
& group photos in front of famous places & moving
advertisements & an ungridded city plan & filter
coffee not drip & please mind the gap & letterpress
& so many different coins & cheers mate & the
world cup & light beer & spiral staircases & glass
towers & spendy museum gift shops & stolen
egyptian artifacts & chunky platform shoes &
beautifully aged brick & staying up late & riso
& unfamiliar toothpaste brands & strings of
lanterns in chinatown & hashtagged instagrams

SIMILARLY DIFFERENT
LONDON, 2014

*Here's some work made by students
and faculty at PSU.*



Similarly Different 2014

An international design collaboration between Portland State University (Oregon, USA) and London College of Communication.

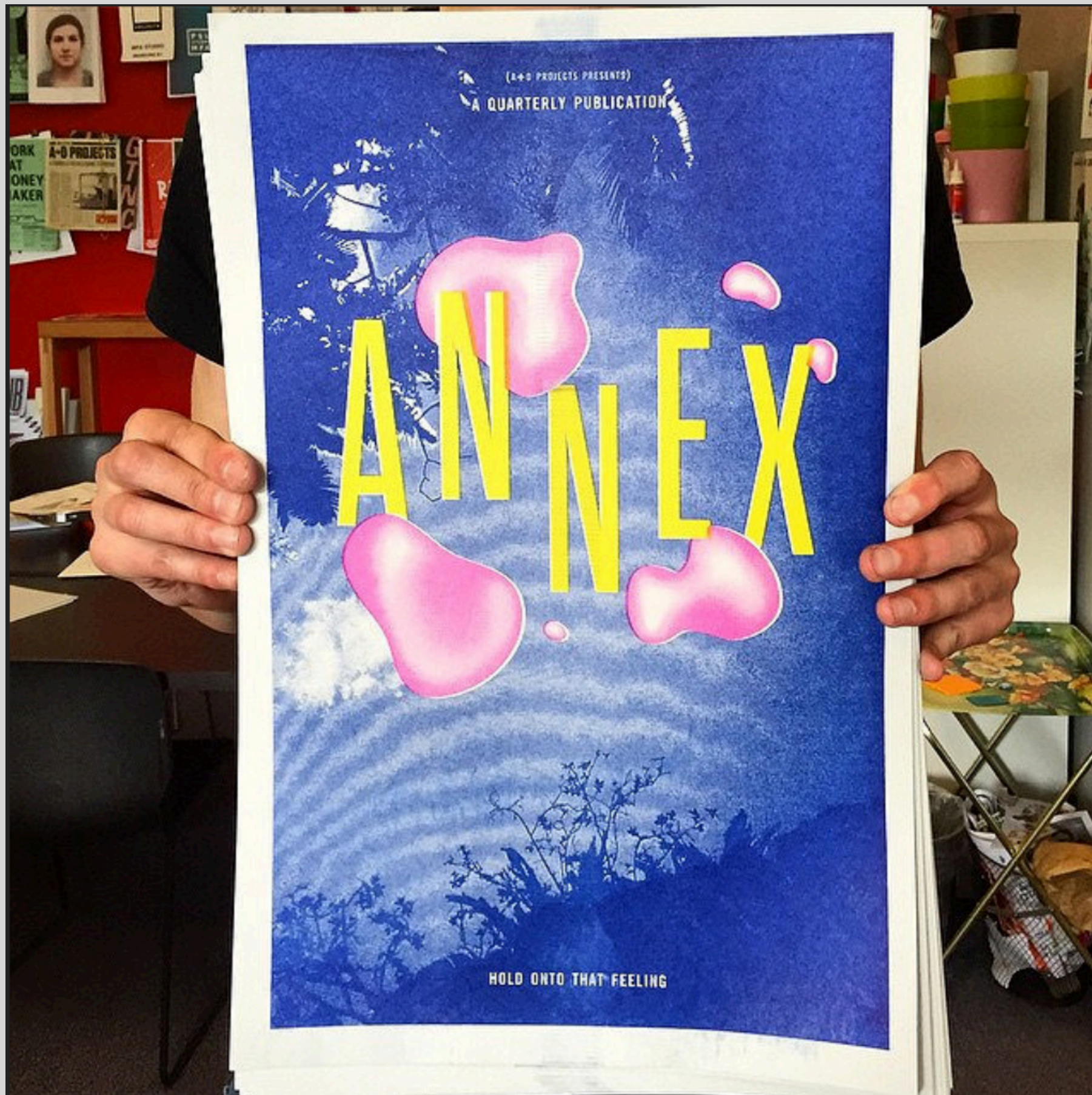
Private View at the Print House
18 Ashwin Street
Dalston, London, E8 3DL
July 17th (Thursday)
6:00pm to 9:00pm

London College of Communication (LCC)
Elephant & Castle
London, SE1 6SB
www.arts.ac.uk/lcc

Portland State University (PSU)
1825 SW Broadway
Portland, OR 97201 USA
www.pdx.edu

Designed & Developed by
Maria Hamet, Grace Song, Jessica Sweet, Oliver Kourousch Zandi







BE
EF

HON
EST





Handwritten text in a stylized, cursive script, overlaid with large, colorful, abstract shapes in yellow, pink, and orange. The text is arranged in several lines, with the words "Handwritten", "Text", "is", "not", "done" visible. The background is a light gray surface.

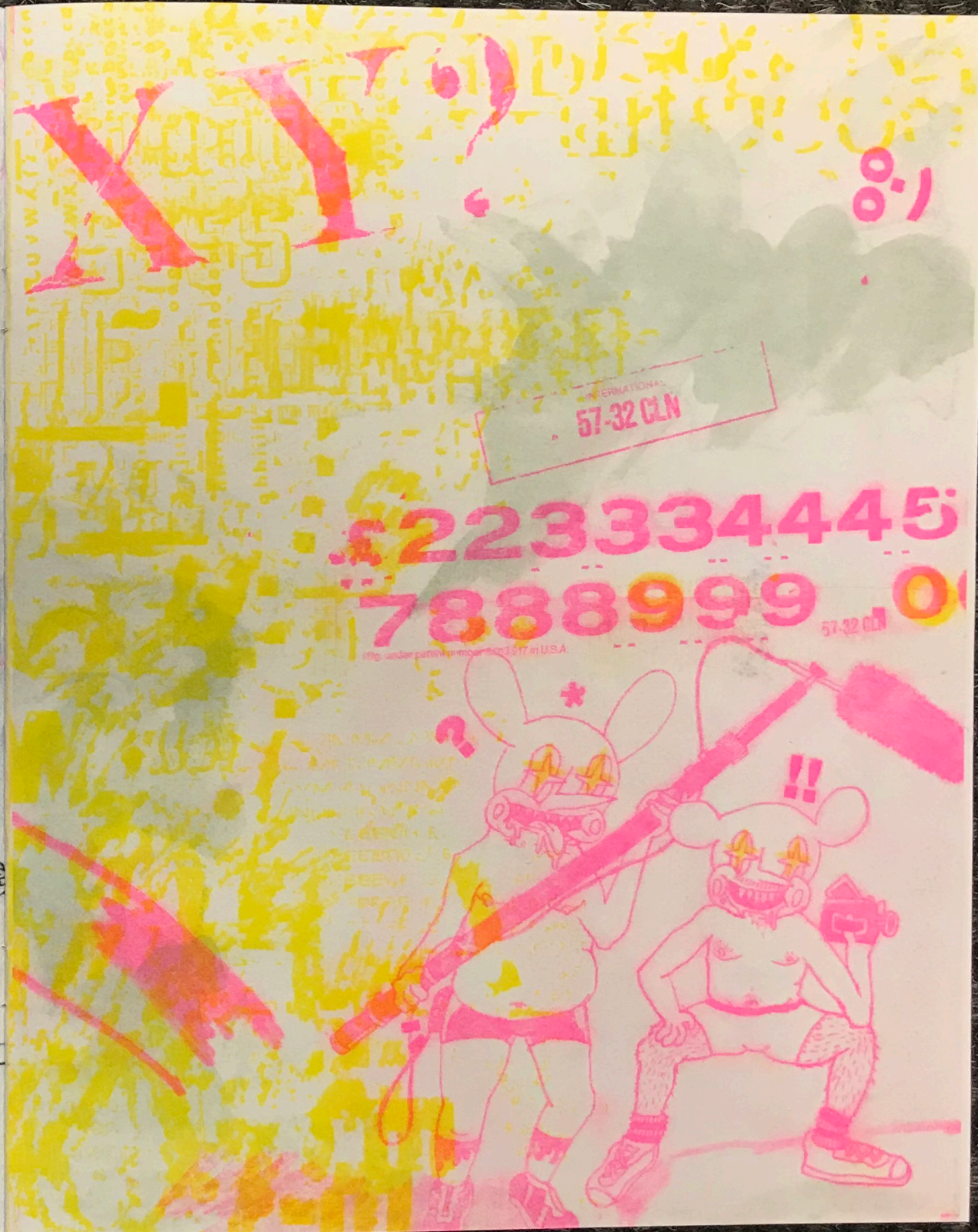
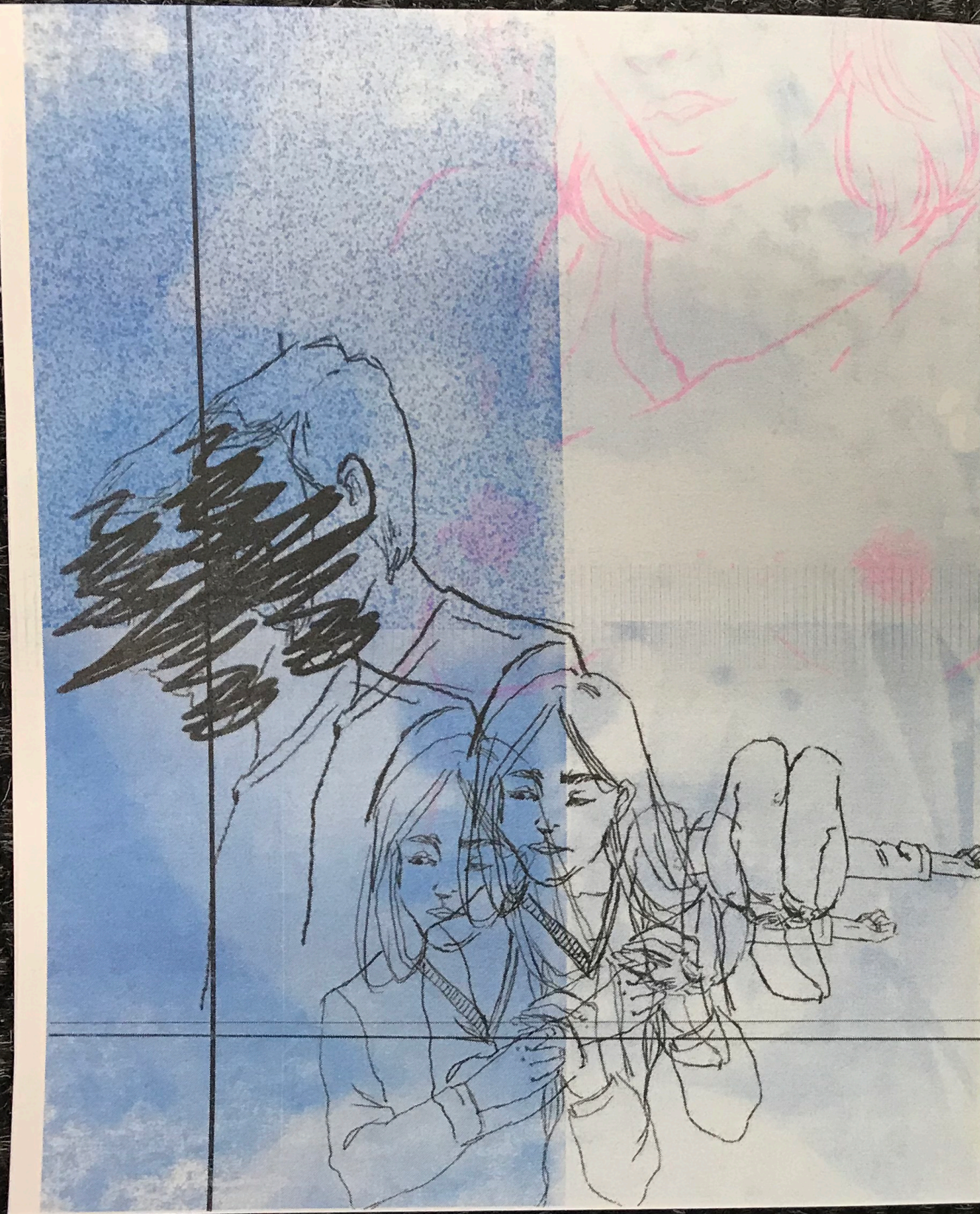
IT

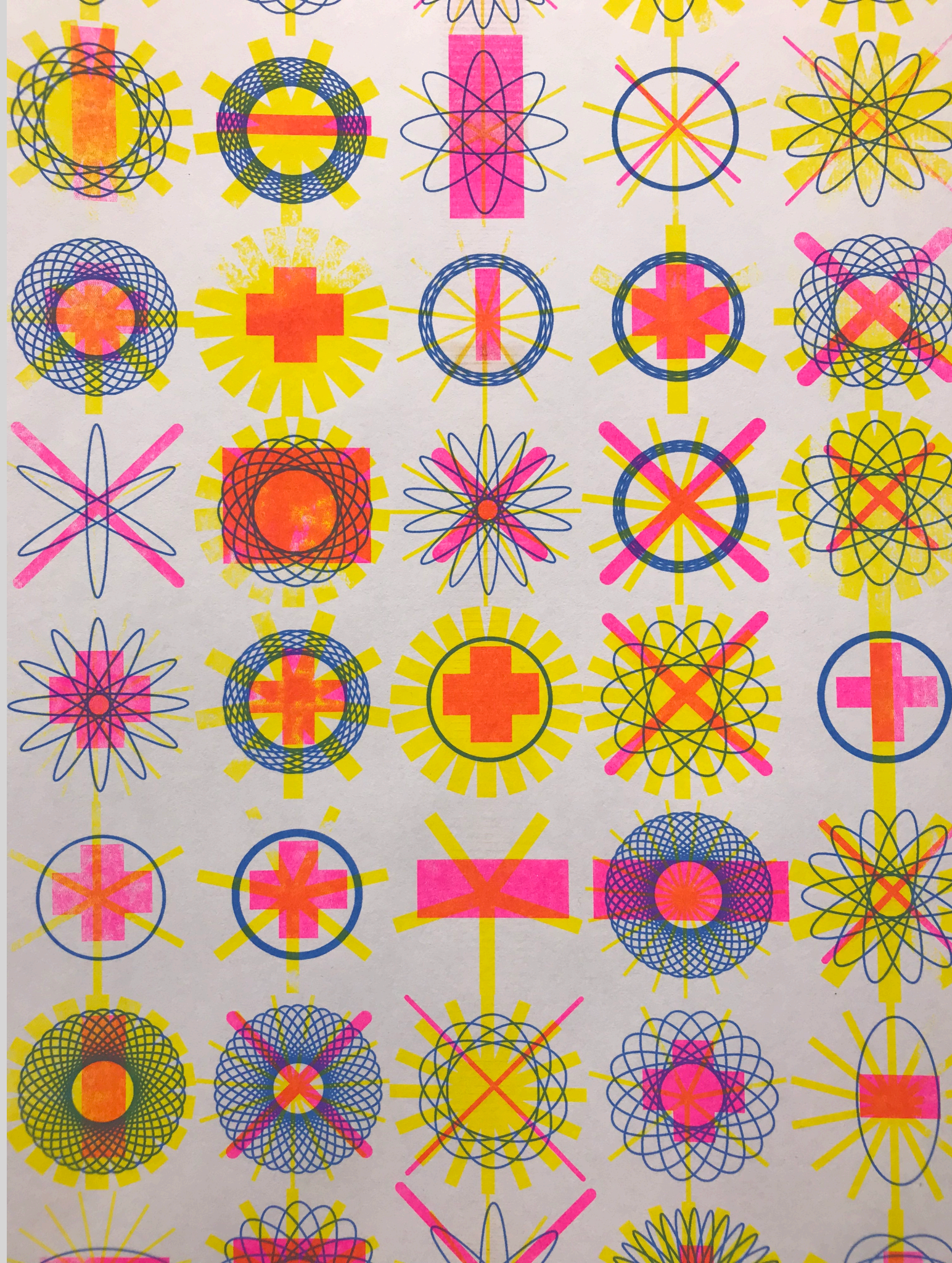
AVE

IMPRE

SSION









Printing in the Rad Lab:

- 1. Supply your artwork on paper or external drive to the Riso Fellow.*
- 2. They will create an estimate for you.*
- 3. If you agree, they will charge you.*
- 4. They will print the job.*

Please allow ample time for printing—especially if you are printing for an assignment that other students are required to print for. This is not an immediate process.

Rad Lab: Annex 170

psu.gd/riso